



CORPORATE PROFILE

Project Management Services For Well Construction & Intervention
Heavy-duty Equipment Supply: OCTG & Line Pipes
Marginal Fields Development & Rehabilitation
Reservoir Management Studies
Gas Detection Systems



CONTENT:

Overview	3
Our People	4
Services and Value	6
Local Content	7
Corporate Responsibility	11
Management Systems	12
Project Portfolio	14

Overview

BRADE

BRADE Consulting Limited provides Project Management Services For Well Construction & Intervention, Heavy-duty Equipment Supply: OCTG & Line Pipes, Marginal Fields Development & Rehabilitation, Reservoir Management Studies and Gas Detection Systems in the energy sector.

Our services are targeted at improving the operating capabilities of indigenous E & P companies particularly in West and East Africa, drawing from a broad spectrum of oilfield training, on-the-job experience and application of world class technology.

Our goal is to exceed client expectations through world class service and improving client efficiency. We utilise the most appropriate people, technology, equipment, tools and services to meet this objective.

Our people are distinguished by their functional and technical expertise combined with their hands-on experience. This guarantees that our clients receive the best-in-class professional service.

As a company, it is our priority to apply corporate governance policies and best practices that promote client and stakeholder interests. These include trust and integrity, transparency, results, responsibility and accountability.

We maintain management systems and processes that guide our teams. Our extensive knowledge base includes well engineering, project management and QHSE standards.

Our IPM models are tailored to the needs of each project and act as an enabler for all our services, in line with clients' objectives. In addition, our commercial flexibility allows us to propose remuneration options that match project objectives and goals.

We are determined to make BRADE Consulting Limited a differentiator and one of the leading firms in project management in the oil and gas industry, and a preferred choice for your project needs.

Our People

BR
A
D
E

At BRADE Consulting, we combine local knowledge, competence and global expertise, industry-leading standards, technologies and processes to support our highly skilled and trained personnel to deliver projects on budget, on time, and to the highest quality and safety standards.

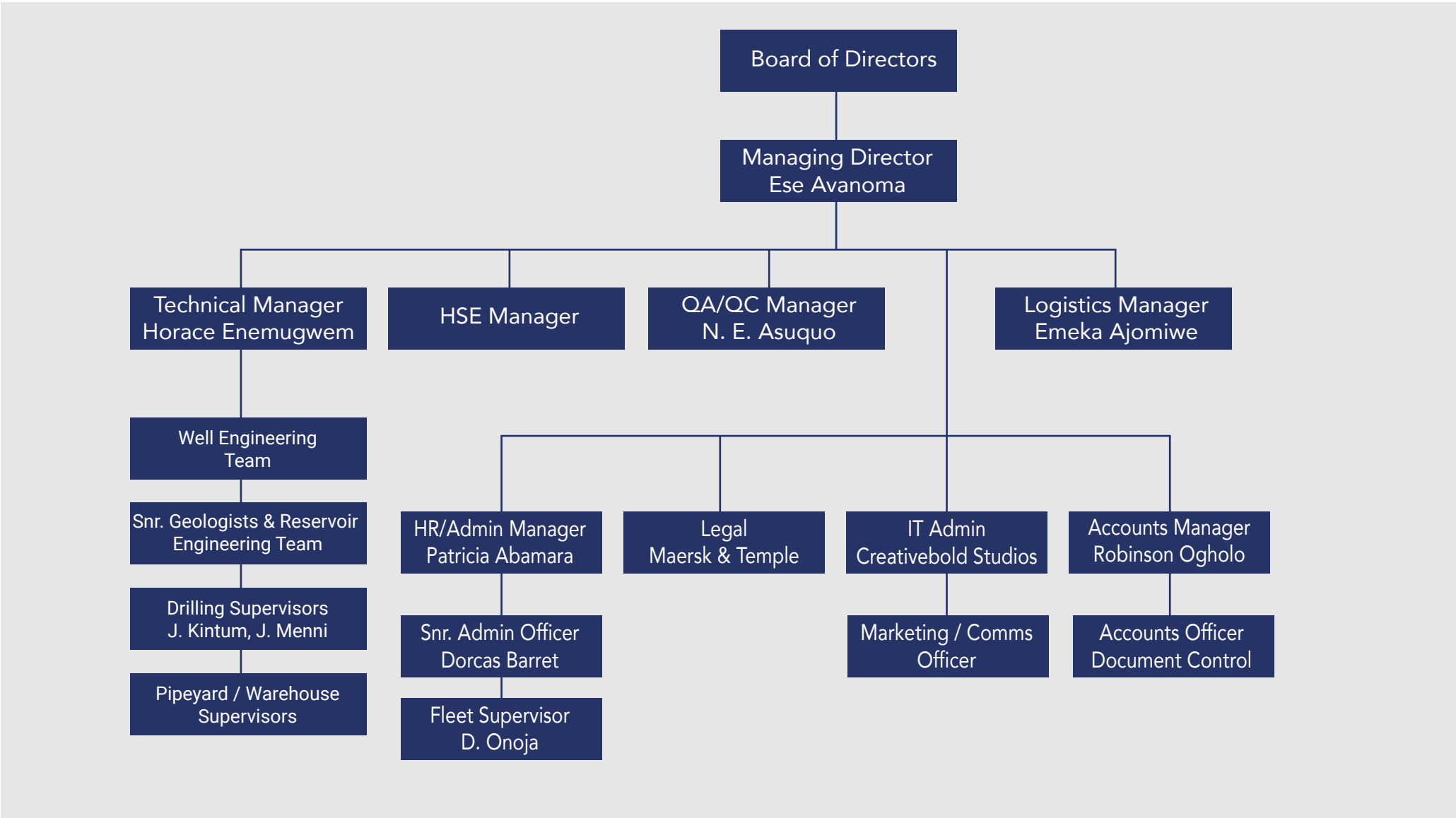
We believe that the industry relies heavily on perception and on the technical and organisational skillset of its key personnel. Recognition and merit are as a result of professionalism, client satisfaction and referrals. Our personnel maintain high level of professionalism and results driven orientation at work and in relationships.

Our personnel are experienced professionals with project management expertise working in Nigeria and around the world (including North, Central and South Africa, North America, Europe and South America).

Our key management personnel have more than 50 years of combined experience in the oil & gas industries.



Organization



Our Services and Value

BRADE

We undertake projects from a single defined technical study up to participation in full field developments, depending on the client's requirements in the following technical areas:

- Well Delivery Services: Well Planning, Drilling & Completions Engineering, Well Construction Project Management.
- Integrated Field Development/Rehabilitation
- Manpower Supply Services (Rig Based Supervisors & Office Based Supervisors)
- Production Management/Optimization
- Heavy Duty Equipment Supply (Christmas trees, OCTG / Tubulars / Pipes)
- Asset & Reservoir Studies & Seismic Data Evaluation
- Gas Detection Systems Engineering & Supply
- GRE-Lined Tubings and Flowline Supply

Full Scope Planning and Support Services includes field development planning and economics; feasibility studies; well design, drilling/completion/workover programming and project management etc.

For large projects, BRADE Consulting will assemble an integrated team of professionals, made up of consultant engineers. These project teams would include engineers and geoscientists skilled in reservoir description (petroleum geology and petrophysics), reservoir engineering, production engineering, well engineering, facility engineering, and petroleum economics.

Well Delivery Services

These integrated service offerings can deliver well construction, well completion, well intervention or production enhancement projects to production companies who want to leverage the expertise and technologies offered through our alliances and partnerships to enhance their operating capabilities. We manage the integrated delivery of exploration & appraisal wells, development wells, well completions and intervention programs to reinstate wells or enhance production. These projects include detailed engineering and design, candidate identification, technology selection, rig contracting & management, well site supervision, project management, logistics, and service execution. In addition, we can manage the workover, intervention and enhancement of well production on a field wide basis. The scope of these offerings range from delivery of a single well to managing entire drilling and workover campaigns.

Integrated Field Development

Leveraging the range of processes and technologies offered through our alliances and partnerships, we can deliver a new field development from subsurface model to first oil and beyond. A typical project includes the development of a subsurface reservoir model, a drainage philosophy, a field development plan, technology selection, subsurface well locations, and well design and engineering. This is followed by the execution of the plan, including well construction, surface facility design, construction and installation and ongoing operational management. A life-of- field approach optimizes the development and overall value of an asset.

By involving BRADE Consulting in the early field development-planning phase, operators can ensure that new technologies are selected and deployed in the most efficient manner. BRADE Consulting will take responsibility during the whole project lifecycle, providing operators assurance and accountability that engineering plans put forward during the field development-planning phase are realized during execution. There is no better alignment of owner and service company.



Integrated Field Rehabilitation

This is a highly engineered and focused business solution for mature fields that aim to deliver a step change in field production levels and increase ultimate recovery. We bring world class operating techniques, engineering and technologies to mature fields, resulting in significant value creation. Most importantly we bring focus. A project scope includes the generation of a completely new subsurface model and a field redevelopment plan. With new technology and focus we can identify bypassed oil and new targets, execute well re-entry, design sidetracking and infill drilling campaigns, optimize existing wells and rejuvenate surface facilities. The field redevelopment strategies, offered via our alliances and partnerships, enhance production rate, extend field life, and increase ultimate hydrocarbon recovery.

Payment for these services can be linked to incremental oil production. This alignment mechanism provides assurance and accountability that engineering plans put forward during the field redevelopment planning phase are realised during execution.

Production Management

This service, offered via our alliances and partnerships, maximises production and minimises lifting costs from an asset. A typical project includes optimising or reengineering well completions and lifting systems, re-completion and stimulation of wells, "debottlenecking" surface facilities, and changing the operating philosophy. Real value is created by integrating and monitoring the vast volume of real-time and static measurements with a digitised model of the entire reservoir and production system.



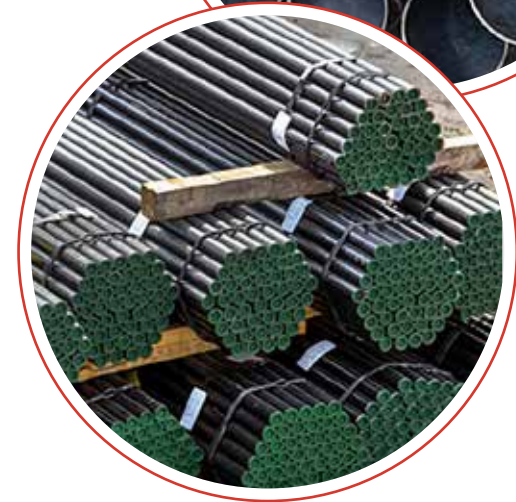
Heavy Duty Equipment Supply

For close to a decade BRADE Consulting Limited has been providing premier Casings, Tubings and Pup joints to Oilfield Operators in Nigeria. We provide a range of OCTG products, including premium threaded connections, manufactured to specification for our clients.

BRADE OCTG supply range include Conductor Pipes, Casings (4-1/2" – 20") and Tubings, Pup Joints, Flow Coupling and Blast joints, as per API 5CT and 5B, including Corrosion Resistant Alloys (CRA) pipes

With minimal overheads and using best fit technology, we design OCTG to specifications using reputable mills and Machine shops globally. We guarantee similar standards for Line pipes.

BRADE Consulting Limited support local content aspirations to ensure 100% OCTG manufacturing locally and is striving to meet full compliance at the shortest possible time.



BRADE

BRADE Consulting is compliant with the Federal Republic of Nigeria's local content initiatives. It is 100% owned and managed by Nigerians.



Corporate Responsibility

BR
A
D
E

BRADE Consulting board, management and staff are committed to the highest standards of corporate responsibility.

Business Standards and Ethics

BRADE Consulting business and ethical standards are fundamental to how the company operates, and includes workplace policies, hiring, training, business conduct guidelines, and ethical and legal standards.

Corporate Governance

We are committed to upholding governance policies and best practices that promote thoughtful and independent representation of stakeholder interests. BRADE Consulting is governed by a board of directors, which has the power to choose an executive officer (Managing Director). The MD has broad powers to manage the corporation on a daily basis, but needs to get board approval for certain major actions, including hiring his/her immediate subordinates, raising money, major capital expansions, or other expensive projects.

Community

We are dedicated to making the dreams of families and children a reality through public service initiatives, community outreach and volunteering to create lasting positive impact in the communities where we live and work around the world.

Environment

BRADE Consulting is committed to balancing environmental stewardship with its corporate goals and operations worldwide. International Labour Standards - We are committed to the promotion and maintenance of responsible international labour practices in our local and international operations .

Safety and Security

The safety of our contractors and our staff members is of paramount importance to us and is evident in programs throughout the company and in our ongoing review and improvement of these programs as needed.

Management Systems

A key aspect of successful delivery of projects is the existence of systems and processes to guide the project team.

QHSE Management

BRADE Consulting QHSE Management System defines the principles by which we conduct our operations with regard to the quality of our services and products, the health and safety of our customers, employees, contractors and communities where we work, and protection of the environment. The primary objective of QHSE is to identify and mitigate risk to as low as reasonably practical to prevent injuries, losses and damage to the environment. All employees are responsible for contributing to a healthy working environment, by performing their work in a safe manner and do what is necessary to prevent injuries and damage to assets and the environment. Each employee is empowered to stop any unsafe act in any place or at any time.

Project Management

Our Project Management System defines the recommended minimum requirements and methodology for both setting up a new project and running an existing project. It includes requirements and methodology for initiation, planning, execution and close out of projects.

Well Engineering Management System

BRADE Consulting Well Engineering Management System, which is an integral part of our Project Management System, describes specific requirements to ensure the technical integrity of drilling projects in terms of processes to follow for adequate planning, design and execution of the well operations. It is implemented via specific project plans by means of a number of elements designed to reinforce service quality.

Further, the system is designed to ensure that lessons learnt during a project's execution are carried forward to create a culture of continuous improvement.

Quality Management System

We are committed to, and believe that, proactively managing product and service Quality delivery is cardinal to customer satisfaction and the long-term success of our business.

BRADE Consulting Quality Management Systems are an integral part of our QHSE, Project Management System and Well Engineering Management Systems.



Our Project Portfolio

BR
ADE

SEPLAT Petroleum Development Company Limited

Technical Manpower and OCTG (pup joints & flow couplings) supply for drilling campaign.

September 2012 – August 2015 | June 2019 – Date (In Progress).

BelemaOil Producing Limited

Inda Field Development Studies.

June 2018 – May 2019.

Elcrest Exploration and Production Nigeria Limited

Equipment Supply: Procurement & supply of OCTG (Pup joints & Couplings)

June 2018.

SEPLAT Petroleum Development Company Limited

Provision of Drilling /Workover Management Petroleum for Lonestar 205 & Caroil 201 Rigs

September 2012 (USD \$1.0m).

Provision of OCTG (Pup joints & Coupling).

March 2013 & 2014 (USD \$15.0m).

JDZ Block 1

Data & Reservoir Studies (USD \$1.0m).

OML 144 Sunlink

Data & Reservoir Studies (USD \$1.0m).

Platform Petroleum Limited

Provision of Drilling Management Personnel Egbeoma Workover and drilling campaign.

June 2009 - March 2012 (USD \$12.5m)

AMNI

Project consultancy services – Sr. Drilling Engineer for Ima Infill Development.

June 2010 - September 2011 (Total Value > USD \$90.0m).

AFREN/ AMNI

Well Construction Project Management (Sr. Drilling Engineer) for Okoro Development Project.

October – December 2008 (Total Value > USD \$3.5m).

Oando Energy Services

Project Consultancy services for planning drilling and field development.

March 2008 - April 2009 (Total Value > USD \$6.0m).

Ecopetrol Colombia

Project Consultancy service for planning drilling and field development.

February 2007 - August 2008 (Total Value > USD \$0.45m).

Rosneft- Stroytransgaz, Algeria

Integrated Project Management services for planning and drilling operation.

June 2005 - April 2006 (Total Value > USD \$18.0m).

Petro-Celtic, Algeria

Integrated Project Management services for planning and drilling operations.

April - October 2006 (Total Value > USD \$23.0m).





Office 4B, No. 28 Raymond Njoku Street,
Ikoyi S.W, Lagos State, Nigeria.
(234) 807 339 3458

info@bradeafrica.com
www.bradeafrica.com



@bradeafrica

